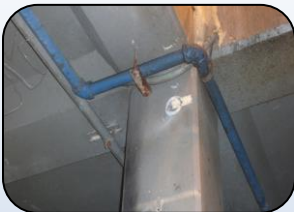


Project Brief

Terminal Island Treatment Plant Beam and Column Strengthening



San Pedro, CA
2009



The Terminal Island Wastewater Treatment Plant in San Pedro, CA required additional flexural strengthening to beams and confinement to columns due to the members being subjected to added stress from new machinery.

Challenges arose as there were obstacles on the beams and the columns that would interfere with the wrap. Due to the versatility of the Tyfo® Fibrwrap® Systems and with the help of Fibrwrap Construction personnel and Fyfe Co. engineers working closely with the contractor, they were able to develop a solution for the fiber to work around the obstacles while still providing the target strengthening required.

Without having to perform the removal and replacement of these obstacles, the owner was provided with a cost and time-saving solution.

Fyfe Co. LLC

8380 Miralani Drive, Suite A, San Diego, CA 92126

Tel: 858.642.0694 Fax: 858.444.2982 Email: info@fyfeco.com www.fyfeco.com