

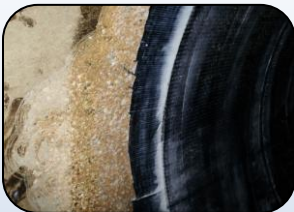
Project Brief

PPL Montana

Pre-stressed Concrete Cylinder Pipe Repair



Montana
2008



Over 100 lineal feet of six, 72-inch diameter PCCP sections in PPL Montana Colstrip Power Plant Unit suffered cracks, both in the longitudinal and the circumferential directions, due to accidental transient pressure. The design working pressure of the pipelines is 65 psi and the soil cover height is 8 ft.

Fibrwrap Construction installed the Fyfe Company's unidirectional Tyfo® SCH-41 System, both in the circumferential and longitudinal directions, as determined by Simpson Gumpertz & Heger Consulting Engineers to restore the pipe sections to their original capacity, and to account for future transient pressure.

Implementing new-age technology, the owner was provided an alternate to conventional construction, which resulted in vast time savings, reduced remedial costs, and reduced shut down time.

Fyfe Co. LLC

8380 Miralani Drive, Suite A, San Diego, CA 92126

Tel: 858.642.0694 Fax: 858.444.2982 Email: info@fyfeco.com www.fyfeco.com