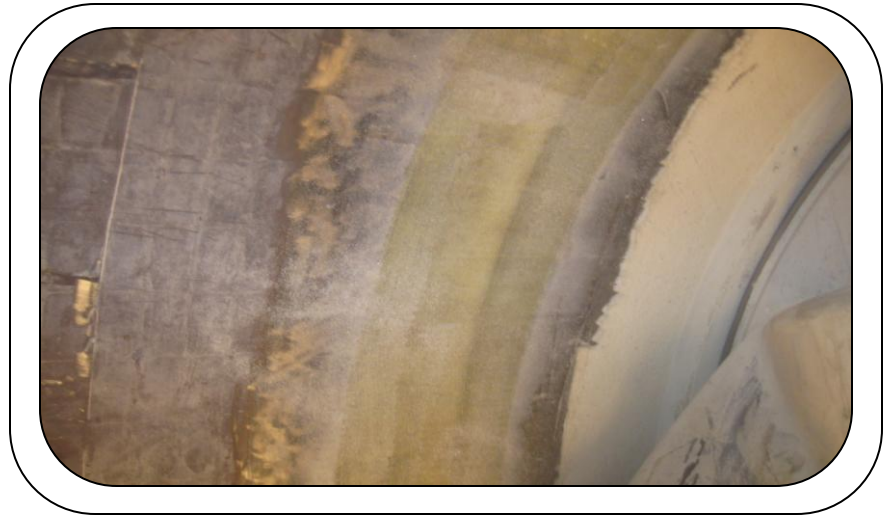


Project Brief

ASU Steel Pipe Joint Repair



Phoenix, AZ
2009



A 90-inch diameter steel pipeline in Phoenix, AZ contained a cast iron valve with a flange joint that is higher than the surface of the pipe and also exhibited leaks.

The mortar where the existing leak occurred was removed. A steel plate was then welded on with nuts at penetrations and the grout reinstalled.

Fibrwrap Construction then installed the Tyfo® SEH-51A System around the existing butterfly valve connection, and filled it with thickened Tyfo® S Epoxy to smoothen and level the uneven connection.

Fyfe Co. LLC

8380 Miralani Drive, Suite A, San Diego, CA 92126

Tel: 858.642.0694 Fax: 858.444.2982 Email: info@fyfeco.com www.fyfeco.com