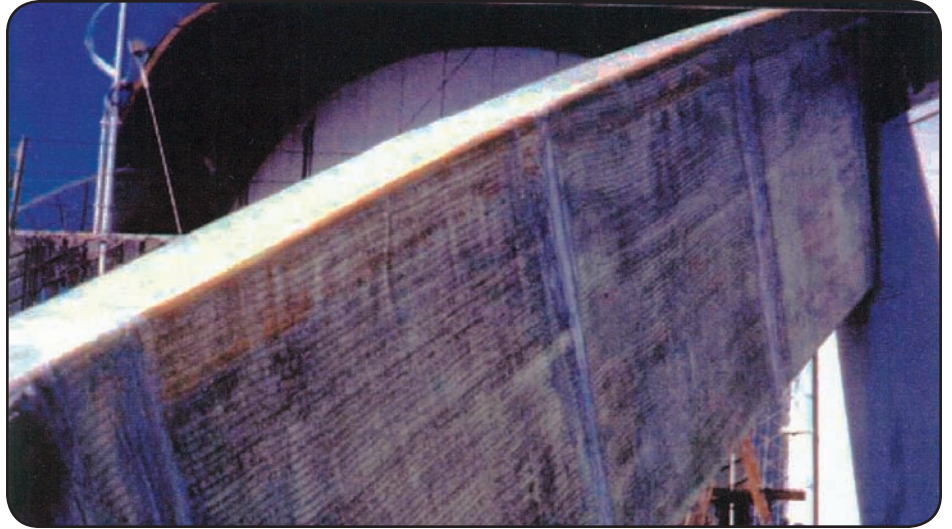


Project Brief

**Paragon Cable Building**  
**Glulam Beam Reinforcement**



Houston, Texas, USA  
1999



Four load-bearing wood glulam beams suffering from severe deterioration were reinforced with Tyfo® SEH-5I E-Glass, saturated in an epoxy matrix. The damaged areas were filled with epoxy grout to bring the beams to their original shape prior to the installation of the Fibrwrap®. A final layer of UV protective paint was applied to ensure long-term performance and wearability. The installation provided external reinforcement and long-term protection from corrosive elements.

**Fyfe Co. LLC**

Nancy Ridge Technology Center

6310 Nancy Ridge Drive, Suite 103, San Diego, CA 92121-3209

**Tel:** 858.642.0694 **Fax:** 858.642.0947 **E-Mail:** [info@fyfeco.com](mailto:info@fyfeco.com) **www.fyfeco.com**