

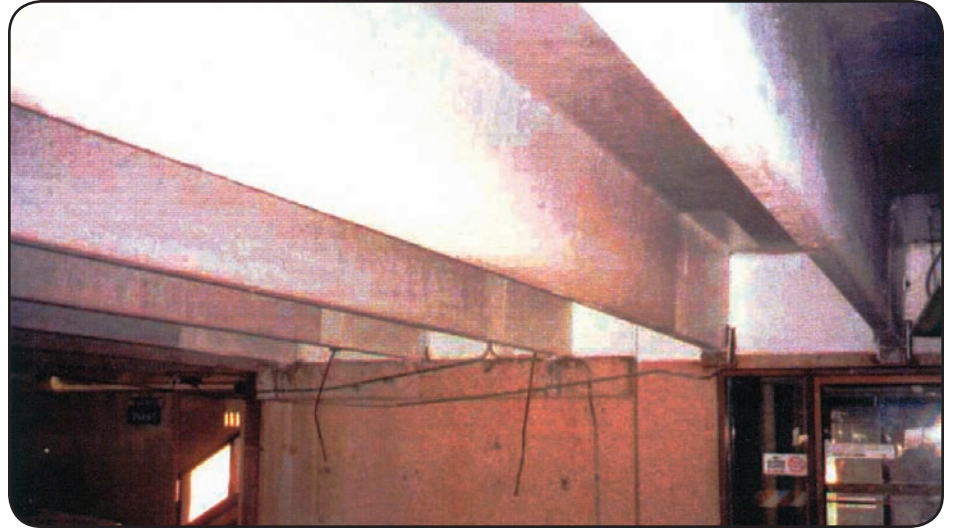
Project Brief

OU Medical Center Parking Garage

Joist and Beam Reinforcement



Oklahoma, USA
1997



Structural deficiencies were identified in several joists and beams throughout the parking garage. Change of Use/Structural Upgrade Reinforce Existing Beam For Upgraded Loadings.

Several beams and joists were reinforced to increase both flexure and shear. Two layers of the Tyfo® SCH-41 (carbon fiber) System were applied to the underside of four beams. A final layer of UV protective paint was applied to ensure long-term performance from the joists and beams.

By using the Tyfo® Fibrwrap® System, the advantages were speed and ease of installation, which kept the price of the project below conventional steel plates. Significant capacity increase was obtained with minimal added weight to the structure. Reinforcement was done at night to minimize operational disturbance.

Fyfe Co. LLC

Nancy Ridge Technology Center

6310 Nancy Ridge Drive, Suite 103, San Diego, CA 92121-3209

Tel: 858.642.0694 **Fax:** 858.642.0947 **E-Mail:** info@fyfeco.com **www.fyfeco.com**