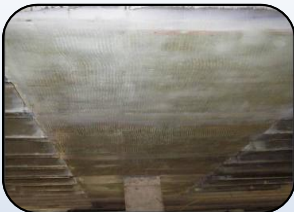


Project Brief

Home and Care Center Floor Rehabilitation



Milwaukee, WI
2006



A large concrete beam and adjacent concrete joist ends were showing signs of deterioration and potential spalling. The area supported mechanical equipment that leaked water, leading to the deterioration of the structure.

The mechanical equipment was removed and the carbon-based Tyfo® SCH-41 Composite System was installed at the bottom of the joist ends to provide strength to the joist ends and supplement possible corroded rebar. The fiberglass-based Tyfo® SEH-51 Composite System was then wrapped around the beam and joist ends to encase the elements and eliminate potential spalling.

Fyfe Co. LLC

8380 Miralani Drive, Suite A, San Diego, CA 92126

Tel: 858.642.0694 Fax: 858.444.2982 Email: info@fyfeco.com www.fyfeco.com