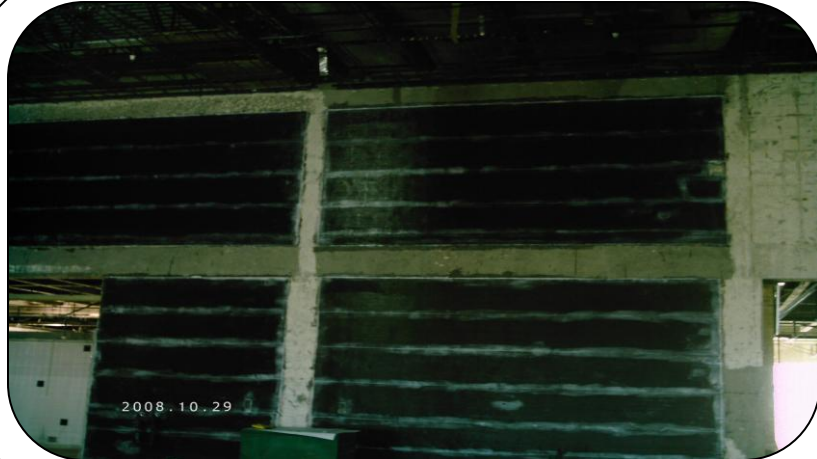


Project Brief

BYU Manwaring Wall Strengthening



Idaho
2009



The Tyfo® Fibrwrap® Systems were installed to provide additional in-plane shear strength for CMU walls and to transfer shear at wall-slab connections as part of a seismic upgrade at the BYU Manwaring Student Center.

Fibrwrap Construction applied 1 layer of the Tyfo® SCH-41 System horizontally to provide the required shear reinforcement as determined by the engineer-of-record. The Tyfo® JT System was also installed at the wall-slab connections utilizing the Tyfo® BC System along with Tyfo® SEH Fibr™ Anchors to provide the required shear transfer.

The Tyfo® RR System was applied as a finish, providing a Class 1 Flame and Smoke rating.

Fyfe Co. LLC

8380 Miralani Drive, Suite A, San Diego, CA 92126

Tel: 858.642.0694 Fax: 858.444.2982 Email: info@fyfeco.com www.fyfeco.com